

# [Link-Arc \(http://link-arc.com\)](http://link-arc.com)



118



## [CIVIC Gallery \(http://link-arc.com/project/guiyang-clubhouse/\)](http://link-arc.com/project/guiyang-clubhouse/)

Located at the center of a dense residential development in southern China, the first design gesture for the Guiyang Membership was not to create a built form, but rather to create an elliptical reflecting pool carved from the landscape. This allows the design to create its own site, to which it then responds. Studio Link-Arc's design for the clubhouse explores multiple relationships to the horizontal datum of the pool, creating spaces which are below the water, at water level, and above the water, creating a series of unique spatial and visual conditions. The ground floor ceiling is maintained at a constant height to further emphasize the sectional change.

The building's interior incorporates a series of double height zones designed as discrete spaces carved from the...

[Expand](#)

- **PROJECT INFORMATION**

- **Project Name:** Guiyang Membership Clubhouse

- **Project Location:** Guiyang, China

- **Project Area:** 3,500 sqm above ground

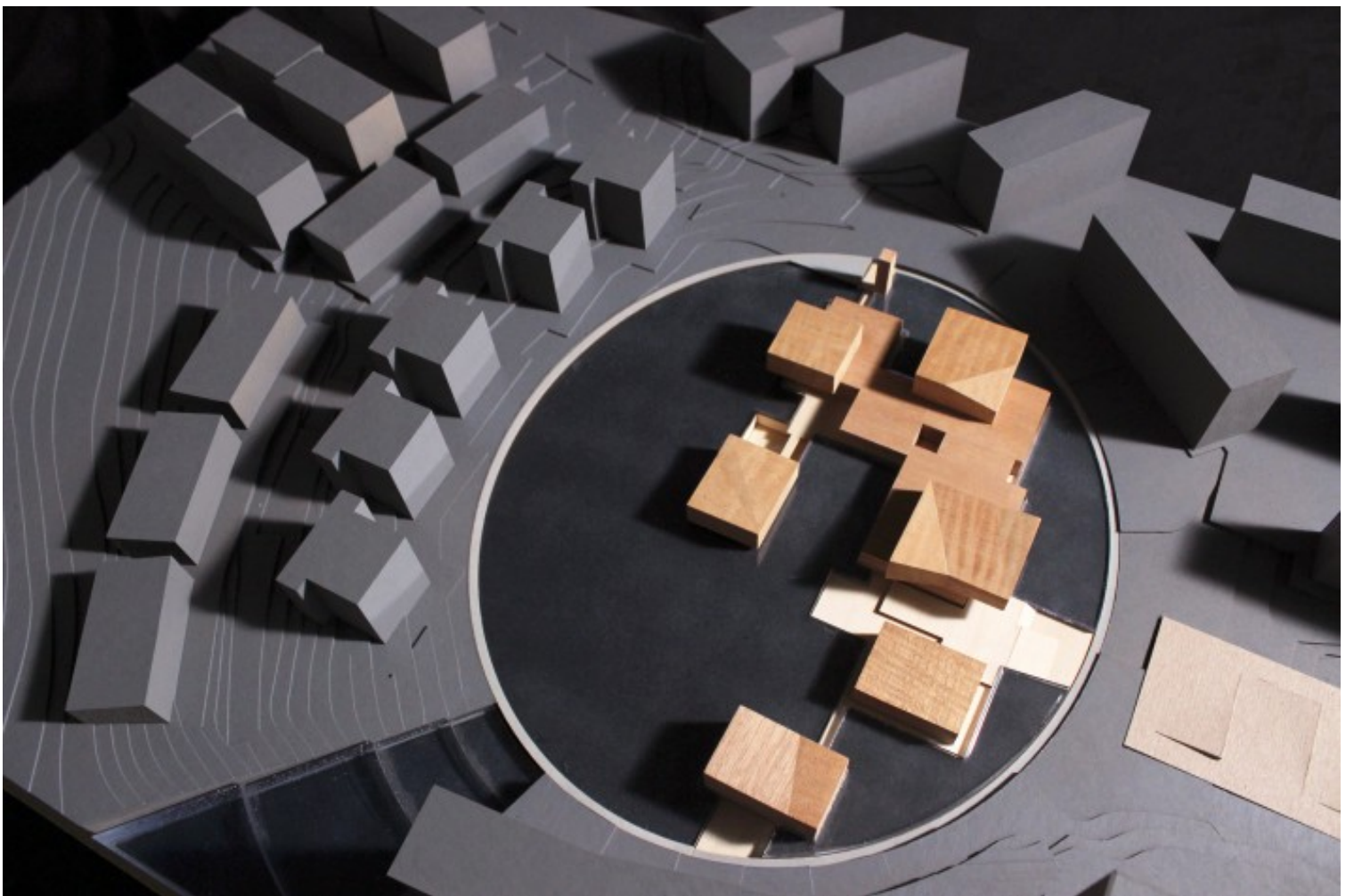
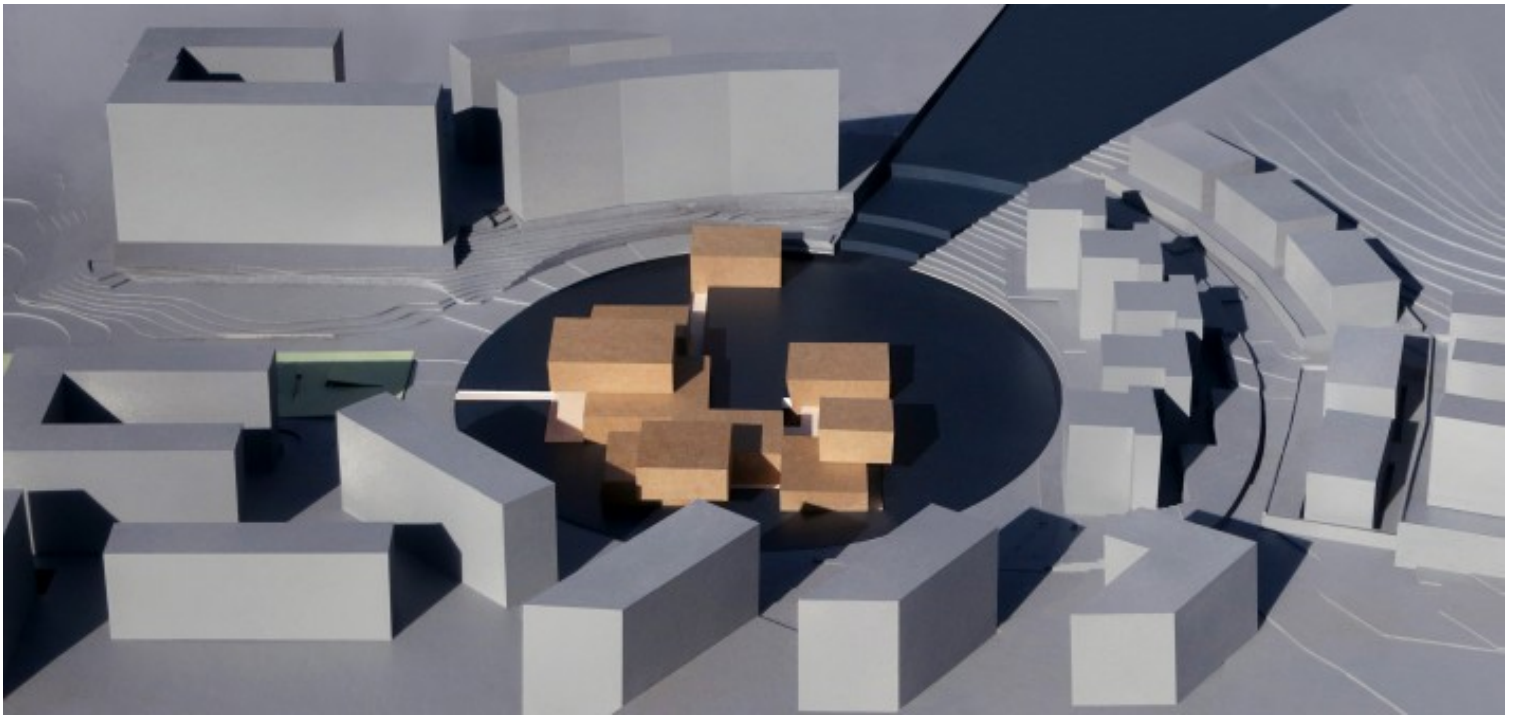
[Expand](#)

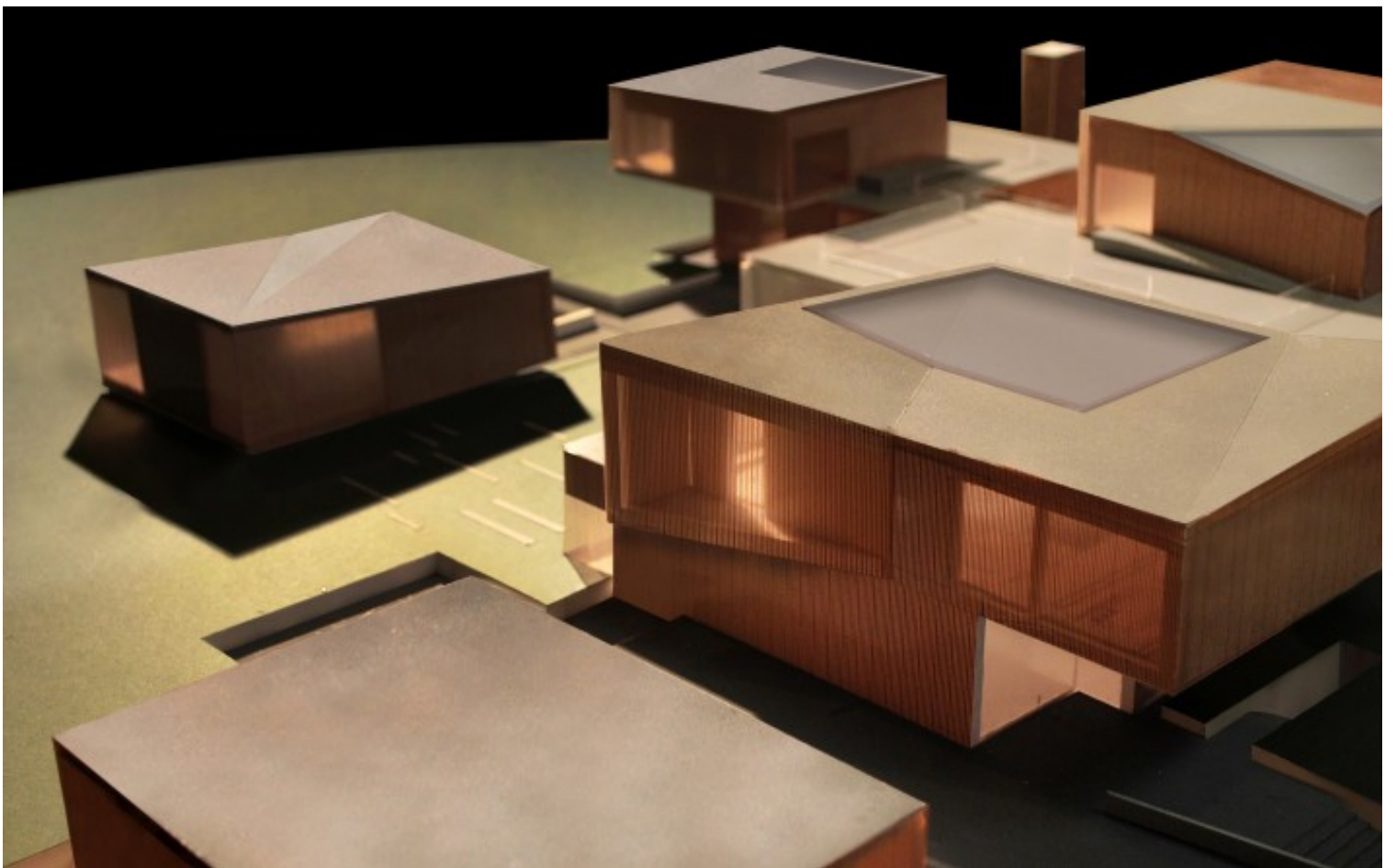
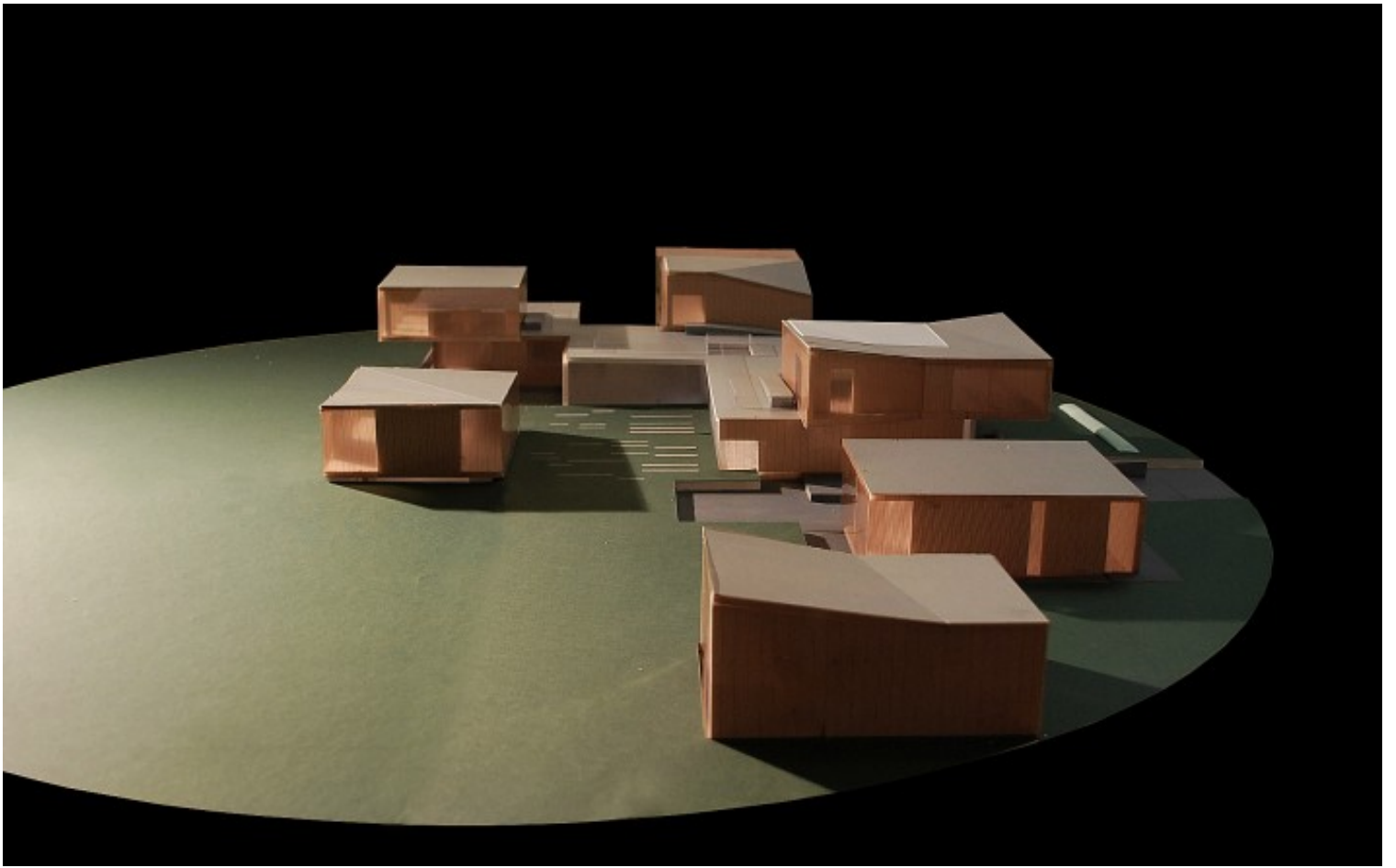
- [en /](#)

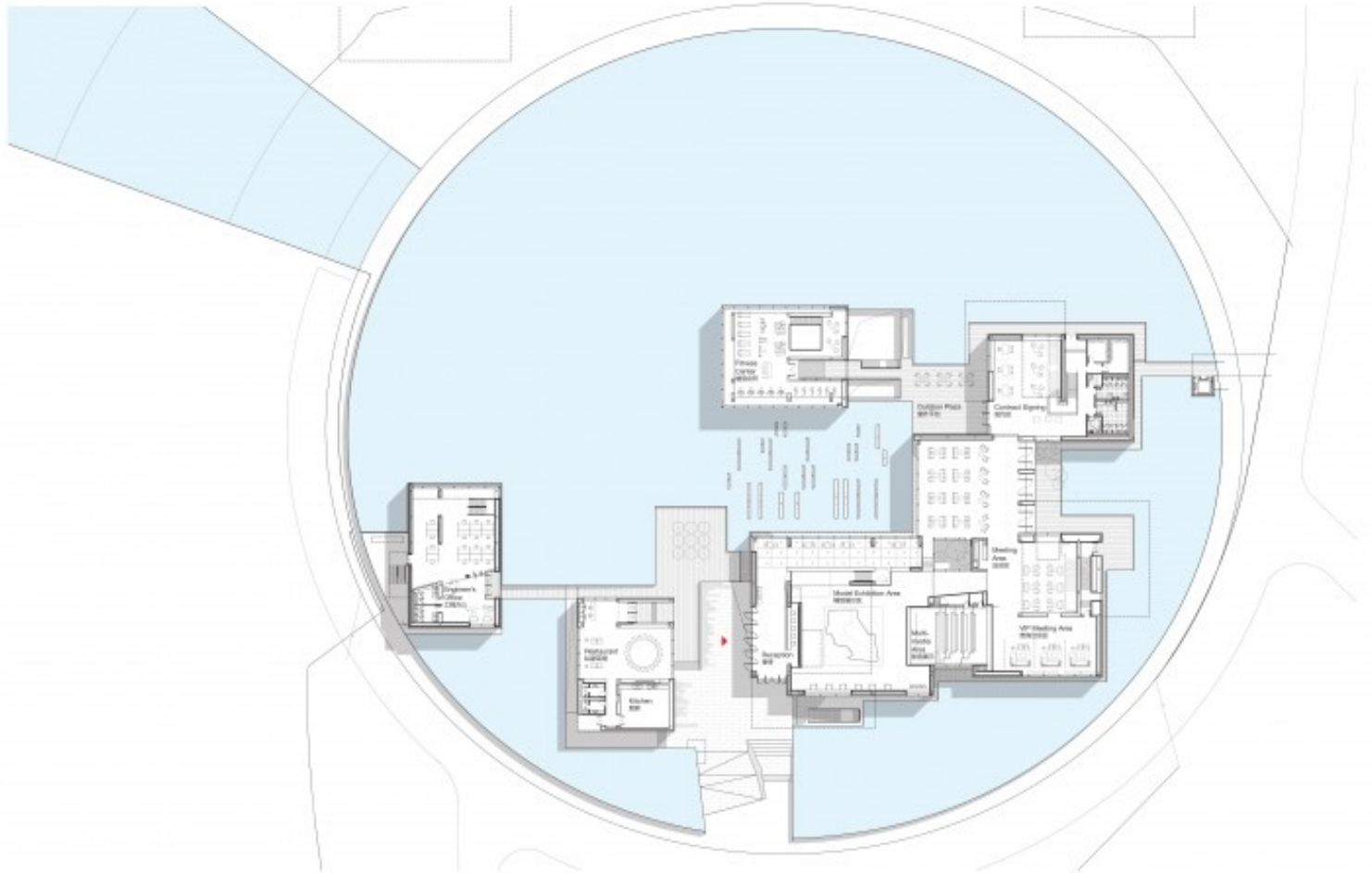
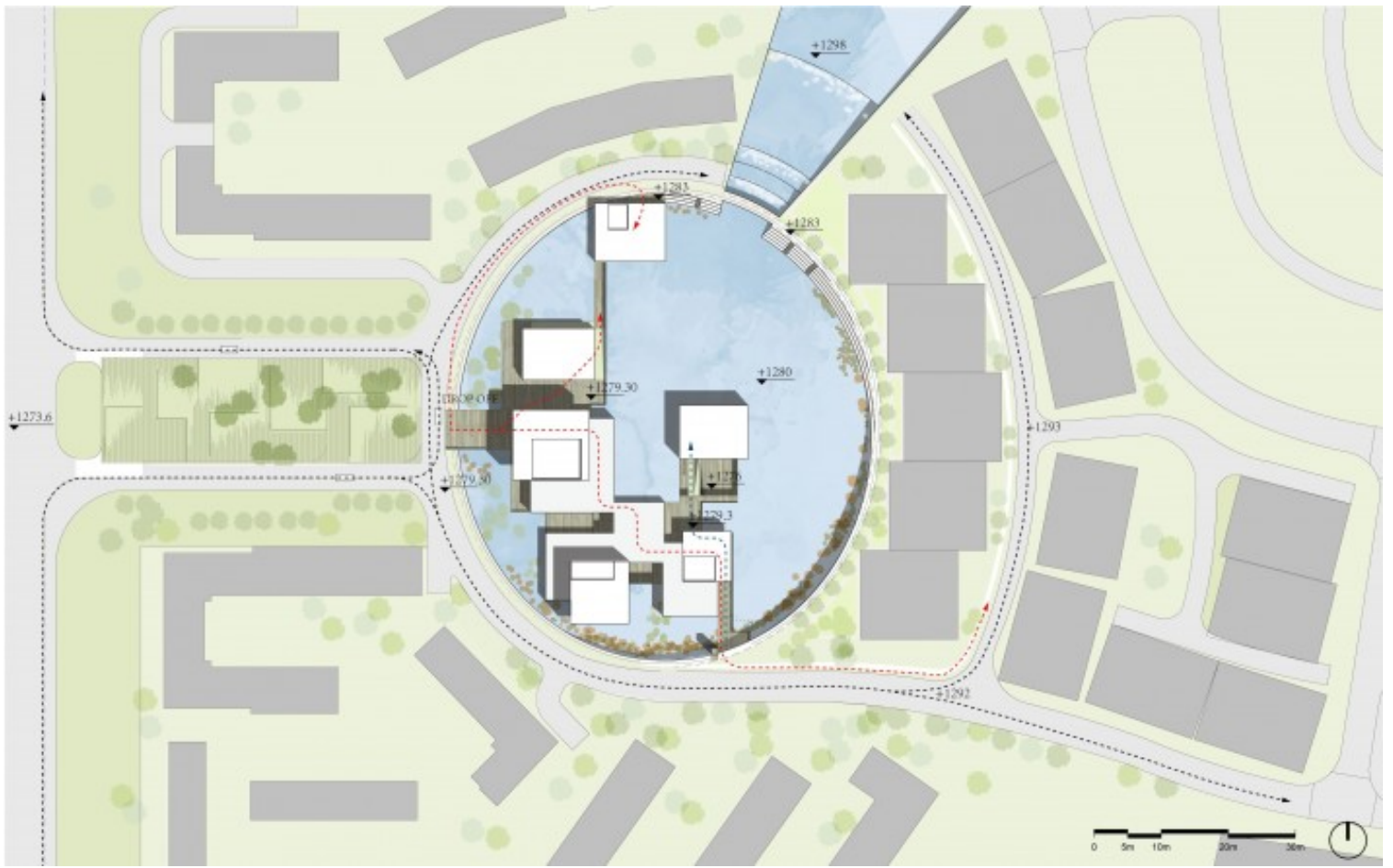
- [中文 \(cn\)](#)
- [Twitter \(//twitter.com/link\\_arc\)](#)
- [Facebook \(//www.facebook.com/linkarc\)](#)
- [LinkedIn \(//www.linkedin.com/company/studio-link-arc\)](#)
- [Architizer \(//architizer.com/firms/studio-link-arc-llc/\)](#)
- [Archinect \(//archinect.com/link-arc\)](#)

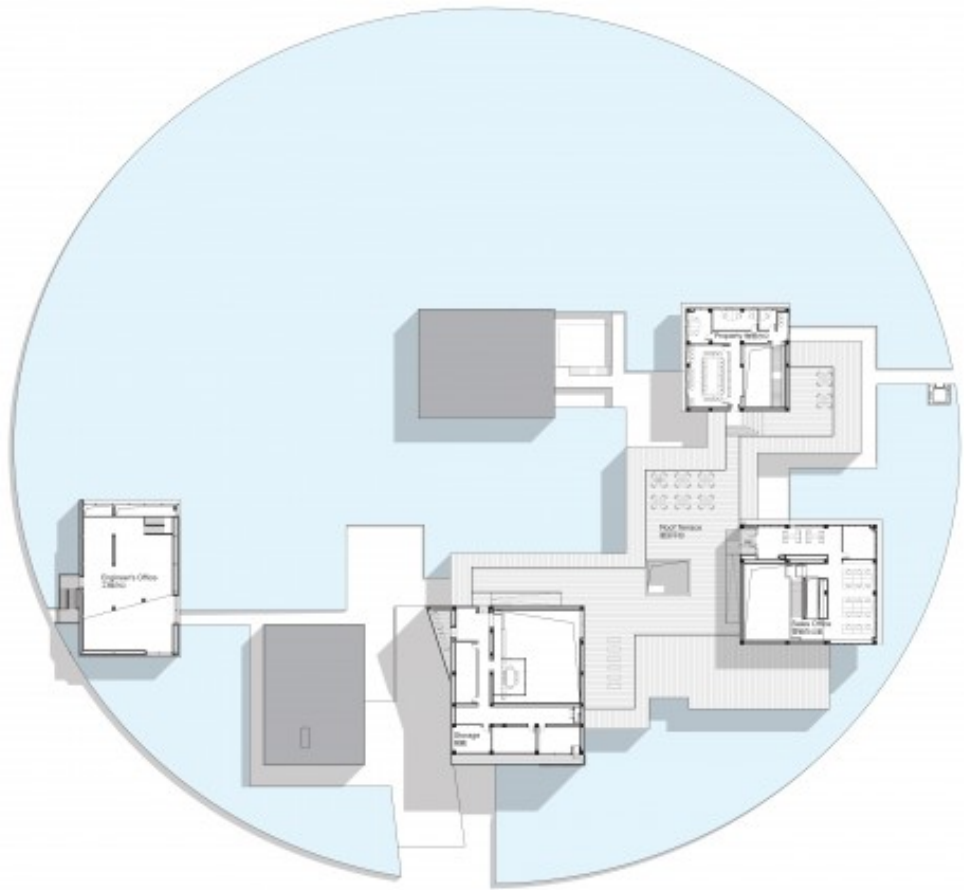
[info@link-arc.com](mailto:info@link-arc.com) (mailto:info@link-arc.com)  
212.414.8832 (tel:2124148832)











above water level  
高于水面



at water level  
与水面齐平



below water level (-0.70)  
低于水面



below water level (-1.50)  
低于水面

